

Directions

Beltway, I-695 to Exit 29, Cromwell Bridge Rd.

At the traffic light at the end of the exit ramp, turn **LEFT** (East) onto **Cromwell Bridge Rd.**

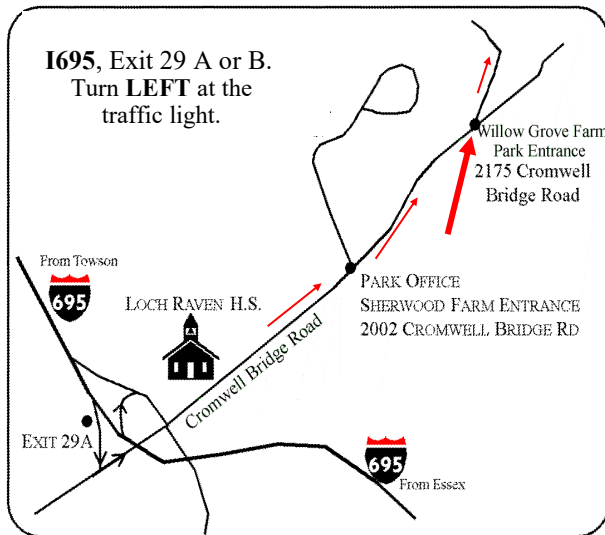
Continue on **Cromwell Bridge Rd** past Loch Raven High School.

The 1st entrance to the Park is Sherwood Farm. Do Not turn into the Sherwood Farm entrance!

Go ½ mile past the Sherwood Farm entrance to the **2nd entrance, Willow Grove Farm.**

Turn **LEFT** into the driveway and continue across the bridge to the gravel parking lot.

BUSES - DO NOT PARK ON THE GRASS without Staff authorization.



Program Information

- Registration for programs scheduled for **January 2 to May 30** begins on **January 2.**
- Registration for programs scheduled for **September 1 to December 15** begins on **August 1.**
- Number of students **LIMITED to 70.**
- All requests **MUST** be submitted using our Program Request Form.
- A confirmation will be sent by Email. Please review it carefully to avoid scheduling errors.
- For all programs, a donation of \$25 is always appreciated to help cover expenses.
- School program requests are limited to 2 trips per season, Tuesday through Thursday.
- Weekday Pre K and K programs are 1 hour in length at 10 AM, except Fall Harvest, which is 2 hours in length at 10 AM.
- All other school age groups programs are 2 hours in length at 10 AM to 12 PM.
- Scout program requests are limited to 2 per season, Saturday & Sunday, 1 hr in length.
- Trips are held **RAIN or SHINE!**
- We do not have indoor bathrooms, but port -a-pots are available.
- Students, chaperones & teachers **MUST** stay together at all times.
- Teachers and chaperones are expected to be fully involved in the program and **MUST** provide oversight.
- Please **do not bring** siblings as our indoor space is limited.
- We have picnic tables to eat your lunch. Bring bags & carry trash out with you.



Please arrive on time!

Cromwell Valley Park Willow Grove Farm Nature Education Center



Department of
Recreation and Parks

Programs for Schools, Groups & Scouts

September through May



**2002 Cromwell Bridge RD
Baltimore, MD 21234**

Nature Center: 410.887.3014

Park Office: 410.887.2503

Email:

info@cromwellvalleypark.org

Website:

www.cromwellvalleypark.org

About the Park

Cromwell Valley Park is 470+ acres of natural beauty nestled between Towson and Parkville in Baltimore County, MD. The Park is a stream valley, with a mixture of wetlands, pasture, cultivated fields, orchards, gardens, & woodlands. Settled for farming in the late 1700s, the Park has a little something for everyone: hiking, bird & wildlife watching, vegetable gardening, community service projects, and more! At our **Willow Grove Nature Center**, we offer Naturalist guided programs on nature, conservation, farming, local and natural history. (revised 12/18)



Most of our programs align with Baltimore County Public Schools science units.

PROGRAM DAYS & TIMES

School Field trips are scheduled at 10 AM on Tuesday through Thursday.

NO Programs will be scheduled on Mondays & Fridays.

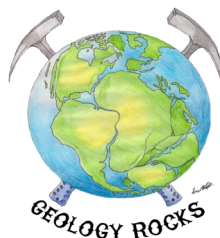
Scout Programs are scheduled at 10 AM on Saturday and Sunday.

**Rain or Shine!
Dress for the Weather.
Wear closed toe shoes.**

**Questions?
Contact the Park Office
410.887.2503**

(Key: S = Spring F = Fall W = Winter)

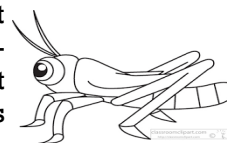
- **Kinder Nature (SFW) 1 hour - Pre K & K only.** Explore a seasonal topic with a Naturalist.
- **Signs of Animals (SFW).** Hike to look for animal tracks, trails, scat, fur, feathers, and other signs. Learn who's here and why.
- **Birds of a Feather (SFW).** How are birds different from other animals? Learn how they are adapted to fly, sing, eat, and build nests. We will hike to look for them.
- **Reptiles & Amphibians (SF).** Snakes, turtles and frogs have fascinating lives. Hike with us to look for and observe them.



- **Geology of Maryland (SFW).** Rocks and the minerals within them are like cookies which have ingredients. We'll hike to discover & collect specimens.
- **Hike into History (SFW).** Join a lime kiln worker and hike to the log cabin and lime kilns to learn about life in Cromwell Valley 160 years ago.
- **The Native Americans of Maryland (SFW).** What was life like for Native Americans before Europeans arrived? Learn by doing some of the things they did daily.
- **Habitat Explorers (SFW).** All animals need food, water, shelter, and living space. Learn how animals have adapted to thrive in their habitats.

- **Stream Strollers (SF).** How does the health of our stream affect the health of the Chesapeake Bay? Wade in with us to catch the critters that live there. Water shoes or boots are a must.

- **Discovering Insects (Late S and Early F).** Explore the park's diverse insect life. Collect and observe insects. Learn about their life cycles and behavior.



- **"Tree"mendous Trees (SFW).** All living things, including us, depend on trees. Hike and identify trees by their shape, leaves, branching, smell, taste, bark, fruit, and seeds.
- **Spring Planting (S).** Learn how plants grow & why farms are important and then plant a sunflower seed to take home.
- **Fall Harvest (F).** What was it like to live on Willow Grove Farm 160 years ago? Join in the harvest as we learn about the crops we harvest in the Fall.
- **Custom Programs (All year round). 1 to 2 hours.** We can customize any of our programs to suit your needs.
- **Scout Programs (All year round). 1 hour on Weekends.** We offer hands-on nature & animal programs that satisfy scout requirements.

